



PedSafety

A Campbell Company



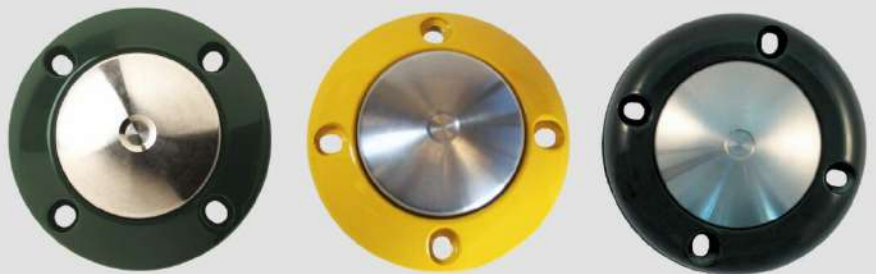
Series Mechanical

Pedestrian Push Button

- Excellent value for basic functionality
- Machined from solid stock with a robust all-metal design
- Flush mountable
- Phenolic enclosed precision snap-action single-pole, double-throw type switch
- Mechanical, swing-action plunger allows for smooth actuation
- ADA and TAC-compliant
- Texture black, green, or yellow powder coat finish
- Clear coat or unpainted finish options

Push Button Options

- Round DCC 200 – Aluminum Plunger
- Round DCC 200 – Stainless Steel Plunger
- Rectangular DCC 500 – Stainless Steel Plunger
- Rectangular DCC 500 – Aluminum Plunger



Powder Coat Colors



SCAN ME!

450 W. McGregor Dr.
Boise, ID 83705

(208) 345-7459

info@pedsafety.com
www.pedsafety.com



PedSafety

Series Mechanical Pedestrian Push Button



200

Features

- Dry Contact
- Snap Action
- All Metal Construction
- 5 Year Warranty
- ADA Compliant

Verisys
Registrars®
ISO 9001:2015
Certified



Overview

This line of robust push buttons consists of an all metal construction to offer increased protection and vandal resistance. The switch is an IP 62 rated, phenolic enclosed precision snap action, single pole, double throw type. A passive linear bearing is utilized to reduce the coefficient of friction in the functional components. All components are machined to precise dimensions and finish. Series push buttons are ADA compliant.

Materials

Series Mechanical Pushbuttons are made from solid stock

- Bezel - 6061 T6 Al
- Actuator SS or - Al
- Field Terminal - SS
- Finish- Powder Coat

Form Factor

- Round – 3" OD
- Rectangle – 2.8"x 4.5"
- Large Rectangle – 5" X 9"

Powder Coated Hard Enameled

- Yellow
- Black
- Green
- Clear Coat - Natural



PedSafety



500

ABOUT

PedSafety is the leading American manufacturer of pedestrian signal safety products, accessible pedestrian signals (APS) pedestrian push buttons, signs, and hardware.

ADDITIONAL INFORMATION

More information can be found at:
www.pedsafety.com



Electrical Specifications

Operating Voltage	Up to 250 V (AC/DC)
Line Voltage	50 V
Switch Current Max	15 amps
On Resistance	< 1 ohms
Operating Mode	NO
Switch	Single Pole

Operating Data

Operating Force	< 3 lbf
Operating Temperature	-15C to 80C
Operating Life	10 x 10 ⁶
IP Rating	62

Materials

Bezel	AL
Actuator	SS, AL
Hardware	SS
Finish	Powder Coat

Form Factor

Round	3" OD – 4 hole, 2 hole
Rectangular	2.8" x 4.5" – 4 hole, 2 hole
Large Rectangular (Cast)	5" X 9" – 2 hole
Color	Black, Green, Yellow, Natural
Warranty	5 Year